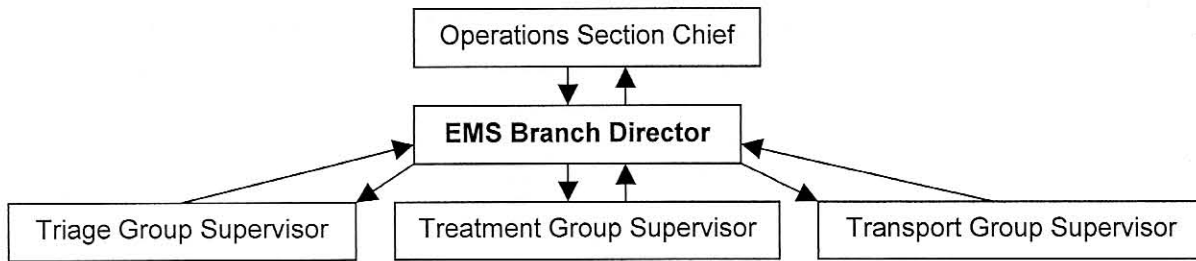


EMS BRANCH DIRECTOR



Check to make sure that you have the following equipment available:

- EMS Branch Director vest
- Communications equipment
- clipboard
- Patient Routing worksheet
- flashlight
- paper
- pens
- pencils
- highlighter
- personal protective equipment

Initial Duties and Responsibilities:

- Put on the EMS Branch Director vest
- Read through this Job Action Sheet
- Remain in contact with the Operations Section Chief
- Ensure safety of EMS responders and others under your command
- Assign and direct Triage, Treatment, Transport Supervisors and determine Treatment and Transport areas, including air medical landing zone
- Request patient count, including the number of pediatric patients, by triage code from Triage Officer. Document on Patient Routing worksheet and relay information to Operations Section Chief.
- Notify closest or designated hospital with patient count
- Using information from Triage Group Supervisor, estimate number of transport units needed and request from Operations Section Chief

Extended Duties and Responsibilities:

- Request additional medical supplies/mass casualty trailer
- Estimate and request additional personnel from Operations Section Chief
- Request status up-dates, as necessary, from Triage, Treatment, Transport Supervisors
- Request Operations Section Chief to notify Medical Examiner/Coroner and, if necessary, communicate need for temporary morgue.
- Monitor EMS personnel for rehabilitation and replacement needs.