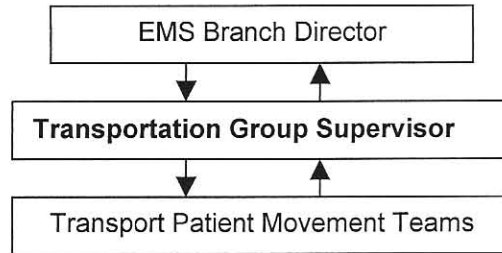


TRANSPORTATION Group Supervisor



Check to make sure that you have the following equipment available:

- Transportation Group Supervisor vest
- Communications equipment
- clipboard
- paper
- pens
- pencils
- flashlight
- large envelope
- highlighter
- Traffic cones
- Personal protective equipment
- Specialty hospital information

Initial Duties and Responsibilities

- Put on the Transportation Group Supervisor vest
- Read through this Job Action Sheet
- Ensure safety of members of Transport Patient Movement Teams and others under your command
- Mark transport area to avoid the backing of transport units
- Assemble and stage Transport Patient Movement Teams.
- Assign crew to manage landing zone, if air transport is to be used.
- Request hospital Emergency Department capability information from closest or designated hospital and record information for reference.
- Direct Transport Patient Movement Teams in moving patients from Treatment area to Transport area.

Extended Duties and Responsibilities

- Request transport units from EMS Branch Director, as needed.
- Direct movement of transport vehicles in Transport area. **At least one member of the transport unit to remain with the vehicle.**
- Direct removal of patient care equipment and supplies from transport units, if needed. Stockpile for delivery to patient treatment area.
- Direct movement of patients from Transport area to transport vehicles. The stretchers/cots must be matched to their home vehicles for transport safety.
- Direct transport units to designated hospitals based on capabilities
- Instruct transport units to return to staging when patient transport has been completed.
- Monitor personnel for rehabilitation and replacement needs.
- Notify hospital(s) and EMS Branch Director when all patients have been transported.