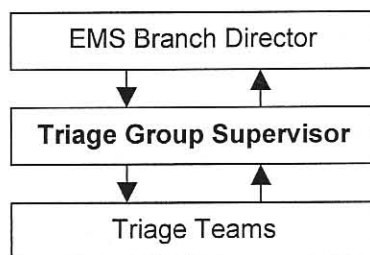


TRIAGE Group Supervisor



Check to make sure that you have the following equipment available:

- Triage Group Supervisor vest
- Communications equipment
- clipboard
- Patient Routing worksheet
- paper
- pens
- pencils
- highlighter
- flashlight
- bull horn
- patient triage tags/marketing system
- triage area identification markers
- personal protective equipment

Initial Duties and Responsibilities

- Put on the Triage Group Supervisor vest
- Read through this Job Action Sheet
- Remain in contact with the EMS Branch Director
- Ensure safety of all members of Triage Teams and others under your command
- Assign staff, select and mark GREEN collection area and announce that anyone who is able to walk is to get up and move to the GREEN collection area.
- Estimate patient count, including the number of pediatric patients, by triage category and document on Patient Routing worksheet. Report numbers to EMS Branch Director.
- Assemble and direct Triage Teams.
 - a. Each patient triaged using START and JUMP START (for pediatric patients) system.
 - b. Triage tag/marker is to be placed visibly.
 - c. Triage teams report patient count to Triage Group Supervisor.
 - d. Retriage as necessary.

Extended Duties and Responsibilities

- Establish system to move patients from Triage area to Treatment area. **Deceased patients are not to be moved.**
- Monitor the supply of patient triage supplies and tags/marketing system.
- Monitor personnel for rehabilitation and replacement needs.
- Assist Treatment Group Supervisor when triage duties are completed.